

VACUUM TUMBLER

MODEL: MV-25

Get more tender and tastier meats and increase profits!



Capacity	25 Kg / 55Lb
Engine	0.2 HP/0.14 Kw
Volts	127/220 Volts
Frecuency	60/50 Hz
Pump capacity	35 Lt/Min
Tumbler speed	6 Rpm
Net weight	20.5 Kg / 45 Lb



- Stainless Steel construction
- Marinate all kinds of meats
- Easy to use
- Marinates your meats in record time, less than 20 minutes
- Easy Easy to disassemble without tools for cleaning

Choose your language



www.tor-rey.com



A world of solutions at your reach



Meat Band Saws



Grinders



Slicers



Sausage Stuffer



Electronic Scales



Deli Merchandisers



Coolers & Freezers



Prep Tables



Electronic Scales

www.tor-rey.com

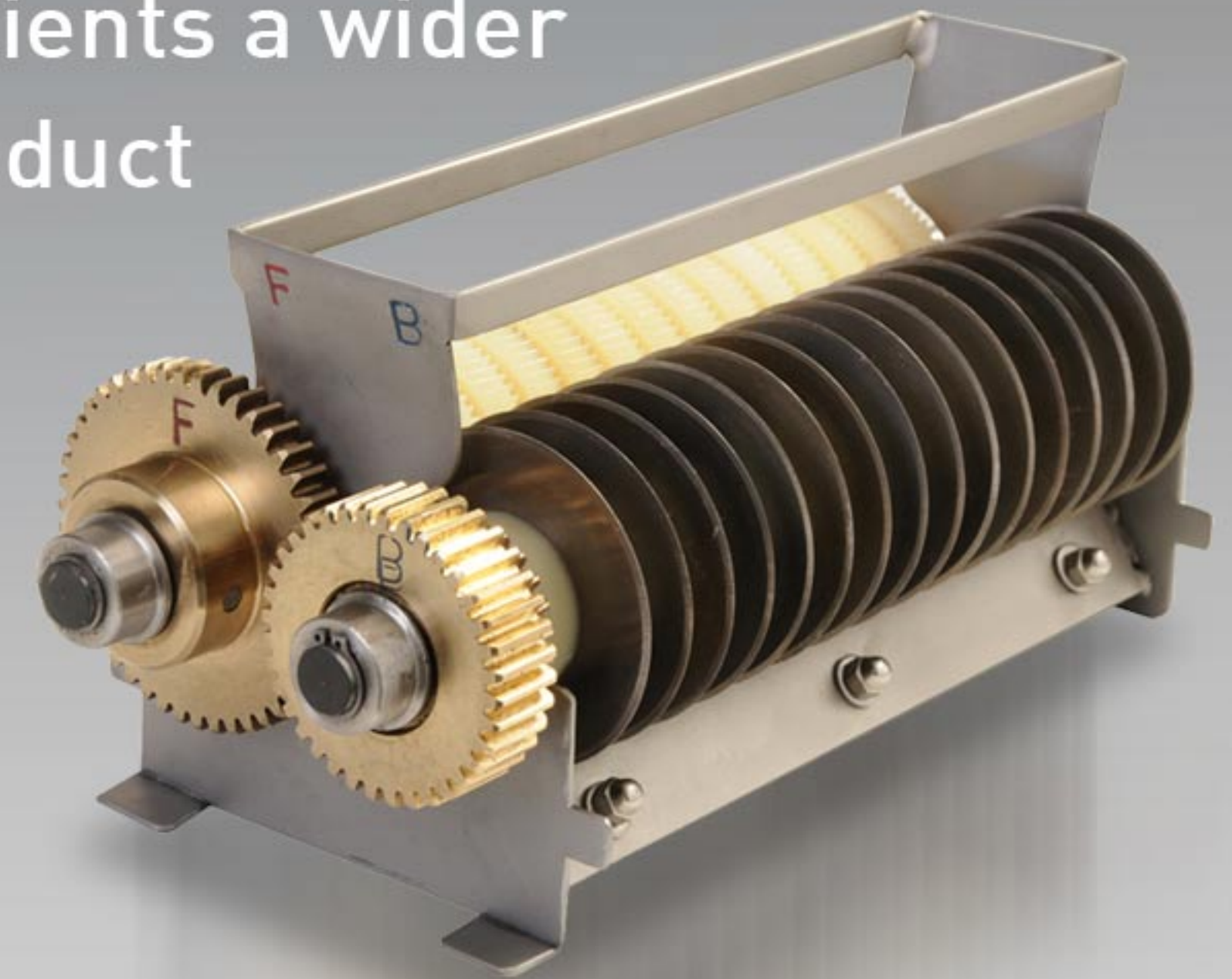
MEAT TENDERIZER

MODEL: MT-43

CREATE FINE CUTS IN SECONDS WHILE INCREASING YOUR PRODUCT VALUE

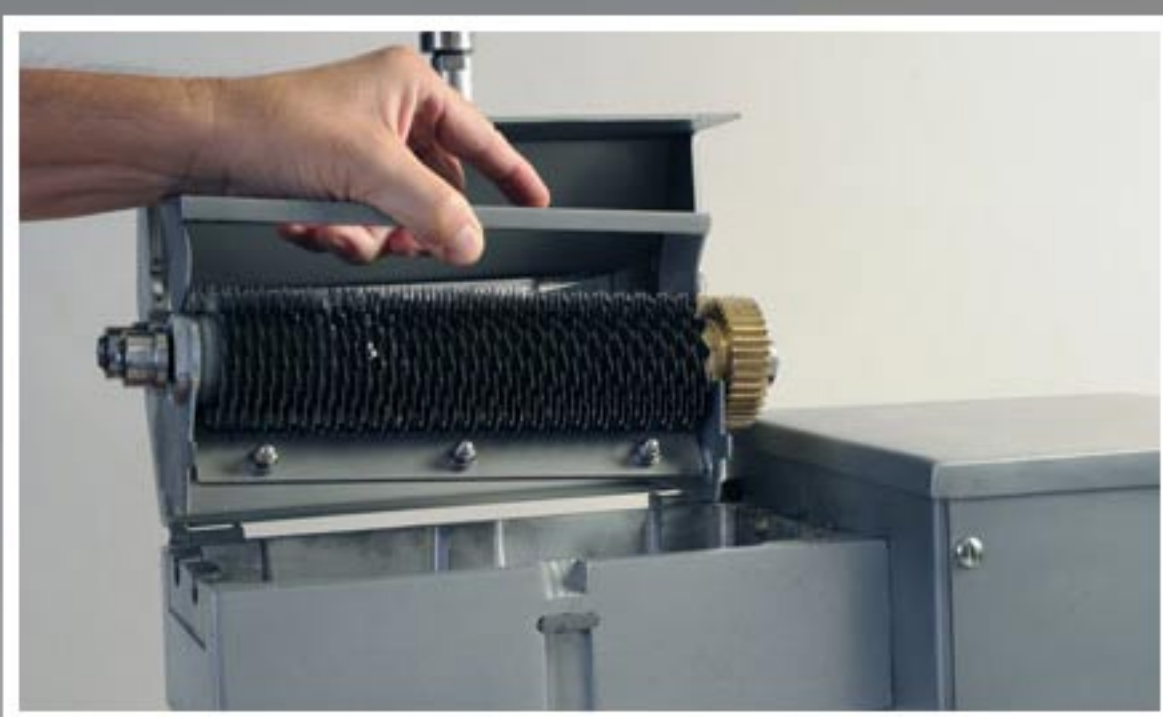
INCREASE YOUR OPTIONS

The fajita kits will allow you to trim your meat cutting process to a few seconds and easily offer your clients a wider range of product options.



- Tenderizes red meats
- Slices beef fajita
- Slices chicken fajita
- Slices calamari and other meats alike

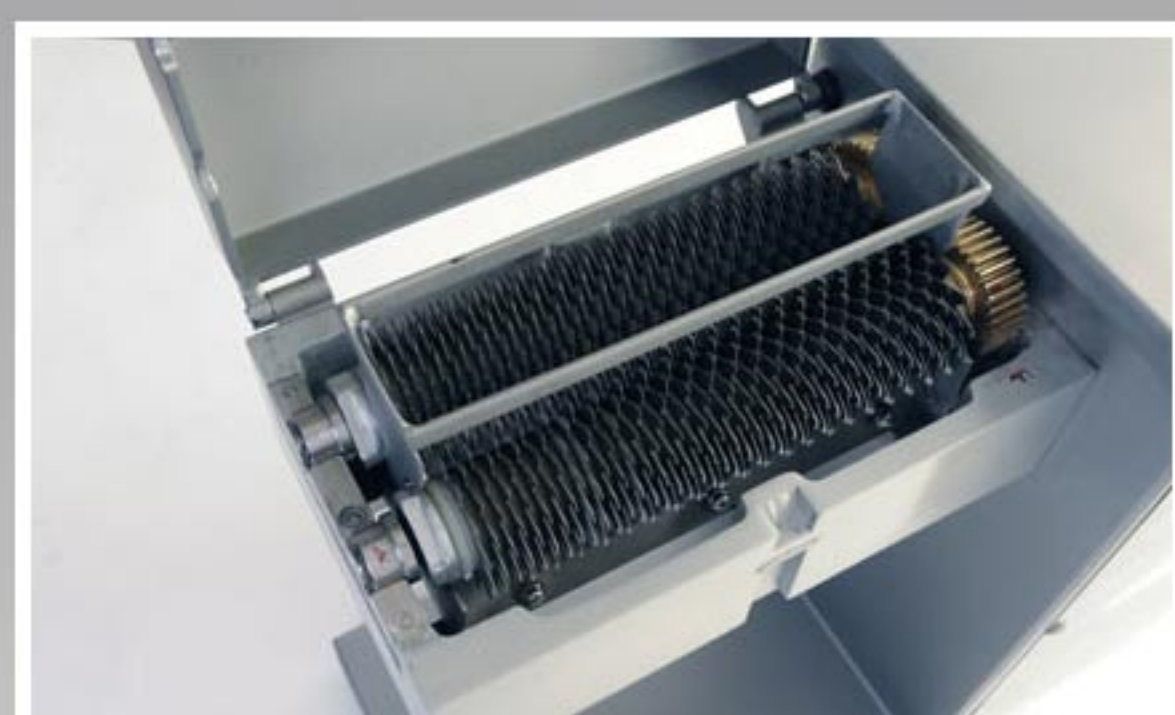
Easy to clean



Accepts thick cuts of meat



URNS YOUR MEAT PRODUCTS INTO TOP GRADE CUTS IN SECONDS!



Durable and resistant



Increases the quality of your product

Model	MT-43
Color	3/4 HP
Voltage	110/220 volts

Maximum Product Width	21 cm
Maximum Product Thickness	2 cm
Net Weight	33 kg
Packaged Weight	39 kg
Dimensions	H 61cm W 24cm D 50cm

- Stainless Steel cabinet, base and lid
- 43 blades to cut through nerves, muscles and fat
- The fajita kit options will speed your slicing time

- Accepts cuts up to 2cm thick and 21cm wide
- Easy to disassemble without tools

MEAT MIXER GRINDERS

MODEL: MMX-32



The most efficient mixer grinder in its class. It mixes and grinds up to 1.8 tons per hour.

Motor	7.5HP -THREE PHASE
Volts	220 V
Frequency	50/60 Hz
Grinding (3/8 plate)	30 Kg/Min, 66 Lb/Min
Grinding (3/16 plate)	23 Kg/Min, 50 Lb/Min
Net weight	232 Kg/511 Lb
Shipping weight	267 Kg/588 Lb
Dimensions (LxWxH)	47" x 35" x 55"



• High grinding capacity
Capable of producing 1.8 tons/hr. The best choice for butchers, markets, packing facilities and industrial kitchens

- Best option for a Supermarket meet room
- Stainless Steel construction
- 7.5 HP motor

- 110 lbs Hopper capacity
- Accepts 32 size knife and plate
- Safety electromagnetic sensors
- Washdown safe
- Easy to move
- Quick disassembly

STAINLESS STEEL MEAT GRINDER

MODEL: M-22-AI



The next generation of grinders is here are so advanced they don't require washers to internally protect their gear transmissions.

Motor	1HP/0.74kw 1Phase
Volts	110 /220 V
Frequency	60 / 50 Hz
**Grinding cap. (3/8)	29 lbs/13 Kg x min
First Ground	
**Grinding cap. (1/8)	14 lbs/6.5 Kg x min
Second Ground	
Net weight	132 lbs / 59 Kg
Shipping weight	163 lbs / 74 Kg

**A grinding capacity 35°F Fresh Meat lab conditions

- Available on 1 or 2 HP motor
- Easy to Clean and Maintain
- Designed for on-demand frequent use by butcher shops and supermarkets

- Heavy Duty
- High Capacity Head
- Gear Transmission designed for long working hours
- Grinding unit, cabinet and pan in stainless Steel.

FOOD SERVICE MEAT GRINDER

MODEL: M-12-FS



High grade stainless steel cabinet and tray, high corrosion resistant and easy to clean allowing a hygienic operation and a professional presentation.

Motor	3/4 HP/0.55kw
Volts	110 or 220 V
Frequency	50/60 Hz
**Grinding cap. (3/8)	7.28 lb/3.3 kg x min
First Ground	
**Grinding cap. (1/8)	4 lb/1.8 kg x min
Second Ground	
Net weight	35.8 Kg / 79 lbs
Shipping weight	39 Kg / 86 lbs

**A grinding capacity 35°F Fresh Meat lab conditions

- Powerful gear transmission designed for long working hours.
- Easy to Clean and Maintain
- Compact size

- Powerful 3/4 HP Motor
- High Capacity Head
- Specially designed for the food service market because of its compact size and reliability

HIGH VOLUME MEAT GRINDERS

MODEL: M-32



High grinding capacity, more than 1700 kg / 3,800 lb per hour in the first ground.

Motor	5HP/3.72kw 1Phase
Volts	220/440 v
Frequency	50/60 Hz
**Grinding cap. (3/8)	64 lb/29 Kg x min
First Ground	
**Grinding cap. (1/8)	31 lb/14 Kg x min
Second Ground	
Net weight	272 lbs/123 Kg
Shipping weight	336 lbs/152 Kg

**A grinding capacity 35°F Fresh Meat lab conditions

- High grade stainless steel cabinet and tray
- 3 or 5 HP motor
- Easy to clean without tools
- High capacity head design and deep pan

- Thermo magnetic contactor protects the motor against overloads
- Leveling feet
- Powerful gear transmission

AUTOMATIC SLICER

MODEL: AMS-350



The best option for the cut of inlays and cheeses. With a programming system that allows you to take advantage of your time.

Motor	1/2 Hp / 0.37 Kw
Volts	120 / 220 V
Frequency	50/60 Hz
Blade diameter	13.78 inch/35cm
Speed blade	370 Rpm
Cut width	0-1.25"/0-31 mm
Net Weight	123 lbs /55Kg
Shipping weight	150 lbs /68Kg
Transmission	Gear

- Made for continuous use and long days of work
- Practical integrated sharpener system
- Automatic or manual use

- Easy to program number of slices, speed and type of Product

- Designed ergonomically for the efficiency of the operator
- Easy cleaning without tools

MEAT SLICER

MODEL: R-300-A



Slices all types of Boneless meat and cheese, including cheddar cheese

Motor	1/3 Hp / 0.25 Kw
Volts	120 / 220 V
Frequency	50/60 Hz
Blade diameter	300 mm/ 11.8"
Speed blade	380 Rpm
Maximum cut width	0-1in /0-25mm
Maximum sliding table	31.75 cm / 12.5 in
Net Weight	38 Kg / 83.6 Lb
Shipping weight	51 Kg /112.2 Lb
Transmission	Gear

- Powerful gear transmission
- Integrated knife sharpener
- True 45° Gravity feed
- Powerful 1/3 HP motor

- Anodized aluminium and stainless steel construction
- Safety operation
- Easy cleaning without tools

- Meat grip
- Long life with minimum maintenance
- Consistency in cuts

MEAT SLICERS

MODEL: RMS-330



This professional heavy duty slicer with its powerful gear transmission will allow you to slice all kind of red meat without a bone.

Motor	1/3 HP / 0.25 kw
Volts	115 / 220
Frequency	50/60Hz
Blade diameter	13 inch/ 330 mm
Speed blade	370 Rpm
Cut width	0 - 1.5 in/ 0-3.8cm
Maximum Sliding Table Travel	13.75 inch/35cm
Net Weight	56 Kg/ 123 Lbs
Shipping weight	68 Kg/ 150Lbs
Transmission	Gear

- Powerful gear transmission
- Hygiene and quality
- Heavy duty design

- Integrated knife sharpener
- Slices from 0" to 1.5"
- Safety operation

- Anodized Aluminum and Stainless Steel construction

STAINLESS STEEL DELI SLICER

MODEL: SS-300



The best choice in the market for its stainless steel construction. Ideal for food service, restaurants and more!.

Motor	1/3 HP / 0.25 kw
Volts	115 / 220
Frequency	50/60Hz
Blade diameter	11.81 inch / 300mm
Speed blade	380 Rpm
Cut width	0-1in/0-25mm
Maximum Sliding Table Travel	12.5 in/31.75cm
Net Weight	29 Kg/64 Lb
Shipping Weight	32 Kg/71 Lb
Transmission	Belt

- Saves time and money
- Hygiene and quality
- Heavy resistance

- Stainless Steel Construction
- True 45° gravity feed
- Integrated knife sharpener

- Consistency in cuts
- Safety switch and operation
- Long lasting knife

DELI SLICERS

Slices all types of deli meat: Ham, Sausage, cheese, bacon, etc.
Ideal for food service and restaurants

MODEL: RB-250



MODEL: RB-300



	RB-250	RB-300
Motor	1/3 HP / 0.25 kw	1/3 HP / 0.25 kw
Volts	127/ 220	127/ 220
Frequency	50/60Hz	50/60Hz
Blade diameter	9.8 inch	11.8 inch
Speed blade	430 rpm	430 rpm
Cut width	0 – 0.47 in/1.19cm	0 – 0.70 in/1.77cm
Maximum Sliding		
Table Travel	10 inch/25cm	10 inch/25cm
Shipping Weight	55 lbs /25Kg	56 lbs /25.40Kg
Net weight	44 lbs/19.95Kg	49 lbs/22.22kg
Transmission	Belt	Belt

- Consistency in cuts
- Hygiene and quality
- True 45 gravity feed
- Dependable belt transmission

- Integrate knife sharpener
- Safety operation
- Long life with minimum maintenance

- Anodized Aluminum and Stainless Steel construction
- Light duty deli slicers

PROFESSIONAL MEAT BAND SAW

Manufactured on stainless steel with sealed bearings, you can wash down your unit in just three minutes after a long work day.

MODEL: ST-295-AI



Saw length	29.5cm/116"
Blade speed	16 m/seg
Throat width	13.5 in / 34.3cm
Throat Height	16.5 in / 41.91cm
Thermomagnetic switches	Yes
Waste tray	Yes
Movable blade guard	Yes
Sealed off bearings	Yes
Leveling feet	Yes
Motor	1.5 hp/1.1 kw
Volts	220v
Frequency	50/60 Hz
Net weight	362lbs/164Kg
Shipping Weight	475lbs/215Kg

- 1.5 HP motor
- Electronic multiple security system
- Stainless Steel construction

- Smooth stainless steel sliding table
- Easy to disassemble without tools
- Hose down washable

SAUSAGE STUFFER

MODEL: ET-25

You can prepare

- Pepperoni
- Salami
- Blood Sausage
- Different types of Sausage.



Designed for high performance. Our Stuffer processes 25kg in less than one minute.

Capacity	25 Kg / 55 Lbs
Motor Power	1 HP
Frequency	60/50Hz
Power Supply	220 volts
Oil Reservoir	8 Liters
Shipping Weight	140Kg/308Lbs
Net weight	126 Kg/278Lbs
Dimensions (LxWxH)	46cm x 54cm x 129cm 18.11" x 21.25" x 50.78"

- Hydraulic system
- Ergonomic activation lever
- Wheels for easy transportation
- Easy to disassemble without tools

- It reduces bubbles, due to the controlled pressure
- Capacity for 25 Kg for product
- Washdown safe

HIGH SPEED STAINLESS STEEL MEAT BAND SAW

High Speed meat band saw. At 32m/s and using a thin blade you will be able to decrease your meat waste up to 27% compared to a regular saw.

MODEL: ST-305 SH



Saw Length	305 cm/120"
Blade speed	32 m/seg
Throat width	13.7 in / 34.79cm
Throat Height	17.71in / 44.98cm
Thermomagnetic switches	Yes
Waste tray	Yes
Movable blade guard	Yes
Sealed off bearings	Yes
Leveling feet	Yes
Motor	3 hp/2.24 kw
Volts	220v
Frequency	50/60 Hz
Net weight	472 lbs / 214Kg
Shipping Weight	519 lbs / 235Kg

- High Speed 3 HP motor
- Electronic multiple security system
- Stainless Steel construction

- Easy to disassemble without tools
- Hose down washable
- Smooth stainless steel sliding table

SCALES Wi-Fi

MODEL: WLS



- The highest technology at your fingertips, earn more money, pre-packing and selling.
- The most easy way to get more sales, save 10,000 items with images and organize in folders to make faster transactions.

LABEL PRINTING SCALE

MODEL: LSQ



The faster way to label your items through an easy programming, controlling your sales and business operations.

Capacity:	20 kg
Minimum division:	0.005 kg
Programmable memories	300 up to 10,000 optional
backlight:	Included
Power supply:	240 V 50 Hz
Maximum tare	9.995 kg
Adaptor:	included
Plate Dimensions:	38 x 30 cm (15" x 12")
Price kg /max.	999.99
Price \$ / max	9999.99
Operation temperature:	-10 to 40°C (14 to 104 °F)
Storage Temperature:	-20 to 50°C (-4 to 122 °F)
Net weight:	18 kg / 39.6 lb
Shipping weight:	21 kg / 46.29 lb

- 300 programmable PLU up to 10,000 memories (optional)
- Up to 20 Sellers
- 72 programable direct access keys
- Advertising LCD display, back light included
- Stainless steel construction
- Ethernet connection



Capacity:	20 kg / 40kg
Minimum division:	0.005 kg / 0.010 kg
Programmable memories	10,000 plu
Screen:	Color screen 8"
Connection:	Wi-Fi or Ethernet 10/100
Power supply:	100/240 V 50/60 Hz
Plate Dimensions:	38 x 30 cm (15" x 12")
Price kg /max.	999.99
Price \$ / max	9999.99
Operation temperature:	-10 to 40°C (14 to 104 °F)
Storage Temperature:	-20 to 50°C (-4 to 122 °F)
Net weight:	12 kg / 26.45 lb
Shipping weight:	16.6 kg / 36.6 lb

- 10000 programable PLU's
- Administrative program tablet application
- To make connectivity in all your scales and improve your sales
- Stainless steel construction
- Easy way to administrate all you products with the WiFi Connection
- Print thermal labels and tickets
- No more pricing errors
- Prices memories 10,000
- Organize all your products with the LED full color touchscreen

PRICE COMPUTING SCALE

MODEL: LPC



Increase your sales faster and easier and organize your items with 9 quick memory access and 100 programable memories

Capacity:	20 kg / 35 kg
Minimum division:	5g / 10g
Display:	(LCD) display
Backlight:	Included
Power supply:	100/240 V 50/60 Hz
Power supply Adapter:	Included
Car's lighter adapter	Optional
Serial port:	RS-232
Rechargeable Battery:	100 h (included)
Maximum tare	9.995 / 9.990
Plate Dimensions:	22.5 x 30.5 cm (8.7" x 11.8")
Maximum price	999.99
Maximum price \$/max	9999.99
Operation temperature:	-10 to 40°C (14 to 104 °F)
Storage Temperature:	-20 to 50°C (-4 to 122 °F)

- More precise 40 lbs with 0.01 lb resolution.
- 9 direct access memory keys
- 100 price memories
- Transactional functions
- Stainless steel construction
- Rechargeable Battery
- PC or Printer Connection

PRICE COMPUTING SCALE

MODEL: PCS

MCE



The PCS scale provides convenient function and features to make faster transactions and improve more sales and providing the tools that your business need

Capacity:	20 kg / 35 kg
Minimum division:	5g / 10g
Display:	(LCD) display
Backlight:	Included
Power supply:	100/240 V 50/60 Hz
Power supply Adapter:	Included
Car's lighter adapter	Optional
Serial port:	RS-232
Rechargeable Battery:	100 h (included)
Maximum tare	9.995 / 9.990
Plate Dimensions:	29.5 x 35.4cm (11 7/16" x 13 5/16")
Maximum price	999.99
Maximum price \$/max	9999.99
Operation temperature:	-10 to 40°C (14 to 104 °F)
Storage Temperature:	-20 to 50°C (-4 to 122 °F)
Net weight:	7.64 kg / 16.84
Shipping weight:	8 kg / 17.6 lb

- Transactional functions
- 7 direct access memory keys
- 100 price memories

- Stainless steel construction
- Rechargeable Battery
- PC or Printer Connection

PORTIONS CONTROL SCALES

MODEL: PZC-5



Make the first and the last dish always with the same portion of food. As tasty and good as the first, at the same cost

Capacity:	5 kg / 10 lb / 10lb
Minimum division:	1g/0.002lb/0.05oz
Display:	(LCD) display
Backlight:	Included
Power supply:	100/240 V 50/60 Hz
Power supply Adapter:	Included
Car's lighter adapter	Optional
Serial port:	RS-232
Rechargeable Battery:	100 h (included)
Maximum tare	5 kg / 10 lb / 10lb
Plate Dimensions:	20 x 24 cm (7.8" x 9.6")
Operation temperature:	-10 to 40°C (14 to 104 °F)
Storage Temperature:	-20 to 50°C (-4 to 122 °F)
Net weight:	4.94 kg / 10.9 lb
Shipping weight:	7 kg / 15.4 lb

- Tare and zero functions
- Toggles between kg/ lb/ lb oz
- Stainless steel construction

- Easy to use
- Built-In Rechargeable Battery
- AC Adapter
- Tare pedal included

Hands Free!
Tare Pedal



PORTIONS CONTROL SCALES

MODEL: L-EQ

MCE



Weights gram by gram and gets exact Portions in every dish! The Perfect ally in your kitchen to save you tons of money

Capacity:	4 kg / 8kg
Minimum division:	1 g / 2 g
Display:	(LCD) display
Backlight:	Included
Power supply:	100/240V 50/60 Hz
Power supply Adapter:	Included
Car's lighter adapter	Optional
Serial port:	RS-232
Rechargeable Battery:	100 h (included)
Maximum tare	4 kg / 8kg
Plate Dimensions:	20 x 24 cm (7.8" x 9.6")
Operation temperature:	-10 to 40°C (14 to 104 °F)
Storage Temperature:	-20 to 50°C (-4 to 122 °F)
Net weight:	3.5 kg / 7.8 lb
Shipping weight:	4.8 kg / 10.7 lb

- Stainless steel construction
- Precision: .002 lb (10 lb)
- High/Low Programmable Alarm
- Easily Toggles Between KG/LB/OZ

- Tare/Zero Function
- Foot tare Pedal (optional)
- Built-In Rechargeable Battery

RECEIVING SCALES

MODEL: FS



The fs scale features a group of practical functions that will help you improve the buy-sell duty by getting always the exact weight, preventing suppliers from selling you less and ensuring customer's satisfaction when buying with no error

Capacity:	400 kg
Minimum division:	0.1 kg
Display:	(LCD) display
Backlight:	Included
Power supply:	100/240 V 50/60 Hz
Power supply Adapter:	Included
Car's lighter adapter	Optional
Serial port:	RS-232
Rechargeable Battery:	100 h (included)
Maximum tare	400 kg
Plate Dimensions:	54.8 x 49.7 cm (21.6" x 19.6")
Operation temperature:	-10 to 40°C (14 to 104 °F)
Storage Temperature:	-20 to 50°C (-4 to 122 °F)
Net weight:	28.76 kg / 63.4 lb
Shipping weight:	35 kg / 77.16 lb

- Weels for easy to move
- Rechargeable 100 hours
- PC or Printer Connection
- Large display with backlighth easy to read

PREP TABLES

Refrigerated Prep Station



PTP-170-2
1 Door, 2 Drawers
Inserts: 9
Dimensions
172cm H x 89cm W x 103cm D



- Extra wide 19" working table
- Clear polycarbonate insert pans
- Removable Cover allows easy cleaning

PTP-170-1
2 Doors
Inserts: 9
Dimensions
164cm H x 89cm W x 103cm D



- Adjustable vinyl coated wire shelves for maximum space utilization

PTP-112
1 Door
Inserts: 6
Dimensions
103cm H x 89cm W x 103 D



UBT-1
1 Door
T: Polypropylene
Dimensions
103cm H x 89cm W x 103 D



- floor interior and exterior Stainless steel, maximum durability and ensures sanitary operation

DELI DISPLAY CASES



TEMs-100
Shelves: 2
Swing Doors: 1
Dimensions
101cm H x 92cm W x 118cm D

- Refrigerant is CFC free
- Gravity coil cooling system, promotes product freshness
- Intelligent Temperature Control promotes energy efficiency



TEMs-150
Shelves: 4
Sliding Doors: 2
Dimensions
143cm H x 92cm W x 118cm D

- Wide Stainless steel top can be use as working table
- Curved front glass provides excellent product presentation
- LEDs illumination, better visibility



TEMs-200
Shelves: 4
Sliding Doors: 2
Dimensions
191cm H x 92cm W x 118cm D

- Adjustable stainless steel shelves
- Low energy consumption, due to top state of the art refrigerant system and insulation

Finish Available In



STAINLESS STEEL FREEZERS AND COOLERS



Cooler / Freezer (20ft³)

Shelves: 4
Swing Door: 1
Dimensions
78" H x 26" W x 33" D
198cm H x 66cm W x 83cm D

Cooler / Freezer (40ft³)

Shelves: 8
Swing Door: 2
Dimensions
78" H x 49.5" W x 33" D
198cm H x 125cm W x 83cm D

LED DISPLAY
NEW LARGE
FORMAT



Connect made easier

- Stainless steel (external and internal)
- Greater capacity, accepts 18" x 16" (40cm x 65cm) bun tray

- Adjustable Shelves
- Intelligent Temperature Control promotes energy efficiency

- Self closing door
- Maintenance Free Condenser Unit
- Available in 20 and 40 cubic feet



Bigger Better
Depth Accepts
18" x 16"
40cm x 65cm
bun tray

83cm
33"

GLASS DOOR FREEZERS



- Forced air system: Ensures uniform temperature through the product load.
- Energy Saving: Made of thick walls that prevent heat interchange.
- Adjustable Shelves: Heavy duty shelves designed to create space maximization.
- Torsion Bar Doors: Self Closing door that reduces compressor effort and saves energy.
- Illuminated sign panel for an attractive exhibition.
- LED Illumination

- Stainless Steel Floor: Ensures sanitary operation and easy cleaning



- Digital Control: Allows you to set the proper temperature for the displayed products



Freezer
CV-16(16ft³)

Exhibition Levels: 5
Doors: 1
Dimensions
80"H x 30"W x 28.3"D
203cmH x 76cmW x 76cmD
120/220V 50/60Hz



Freezer
CV-32(32ft³)

Exhibition Levels: 5
Doors: 2
Dimensions
80"H x 54"W x 28.3"D
203cmH x 137cmW x 76cmD
120/220V 50/60Hz

BAND SAW BLADE

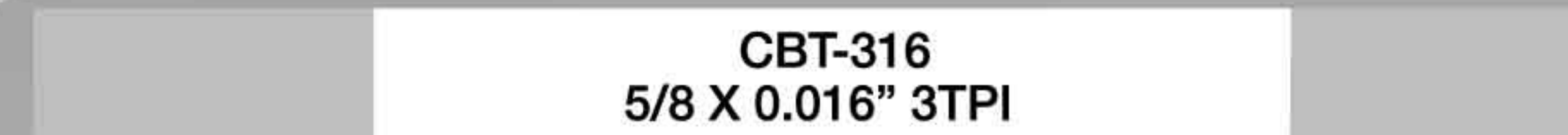


Optimizer the power of your band saw blade

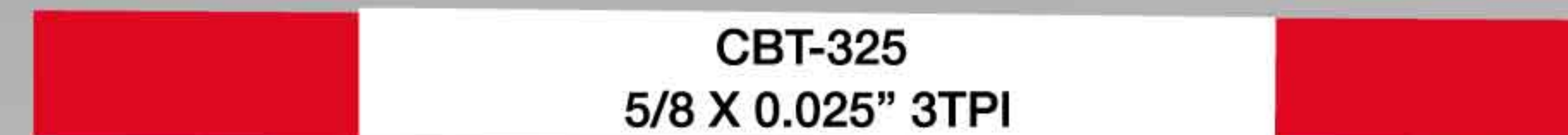
The manufacturing process of our saw blade band has been improved over the years. TORREY has reached the standards in the quenching of the teeth to ensure the highest quality in our band saw blade.

TAPE BAND SAW BLADE MODELS

EXCLUSIVE HIGH SPEED SAWS



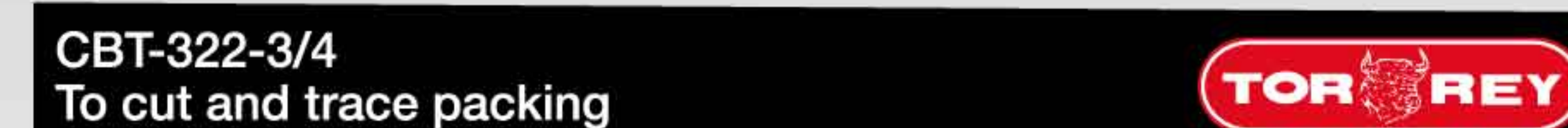
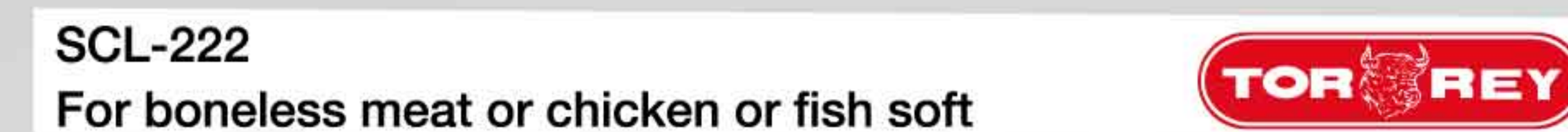
HIGH SPEED SAWS



LOW SPEED SAWS



SPECIAL SAWS

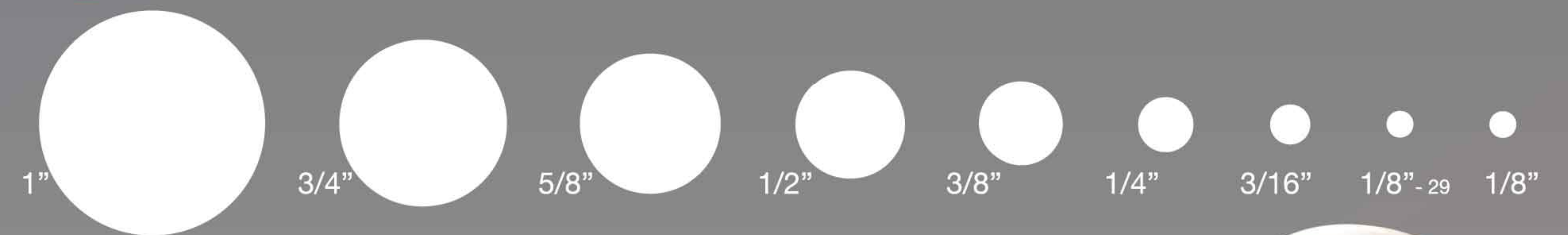


	THICKNESS	LENGTH	TEETH PER INCH	WIDTH
CBT-316	0.016"	60"-172"	3	5/8"
CBT-325	0.025"	60"-172"	3	5/8"
*CBT-322	0.022"	60"-172"	3	5/8"
CBT-425	0.025"	60"-172"	4	5/8"
*CBT-422	0.022"	60"-172"	4	5/8"
SE-20	0.020"	60"-172"	N/A	5/8"
SCL-222	0.022"	60"-172"	2	5/8"
TI-1025	0.025"	60"-172"	10	5/8"
CBT-322-3/4	0.022"	60"-172"	3	3/4"

ilable 1/2"



MEAT GRINDING PLATES



TORREY Meat Grinding Plates are made from high quality steel with a controlled heat treatment, which makes them resistant to wear and stress. Our products, keep quality standards set by MISA (Meat Industry Suppliers Association).

Grinding Plates Models

Stainless Steel
Long Life
HUB reversibles

Sizes
12, 22, 32, 52, 56



GRINDING KNIVES

TORREY Grinding knives are manufactured with quality steel with a treatment controlled heat, making them more resistant to wear and stress. Its precision grinding ensures a uniform surface, helping to improve performance.



-Stainless Knives (NI) -Stainless Knives (NIR) -Long Life Knives (NLV)

