



**LOW ENERGY CONSUMPTION**  
Thanks to its refrigerant system, its insulation and the three pane glass on the doors, the TORREY display freezers guarantee big savings on energy.



**ENVIRONMENTAL CARE**  
The refrigerant used on TORREY products is CFC's free, which Will not damage ozone layer.



**ENCOURAGE SALES WITH AN ATTRACTIVE EXHIBITION**  
Illuminated sign panel for an attractive exhibition and increase sales with your own sign



**EASY TO INSTALL**  
No special installation is required, just plug in and it is ready



**GUARANTEE EXCELLENT PRODUCT PRESENTATION**  
The three pane glass doors of the TORREY freezers, besides duplicating insulation, avoid condensation on the doors under normal conditions of humidity.

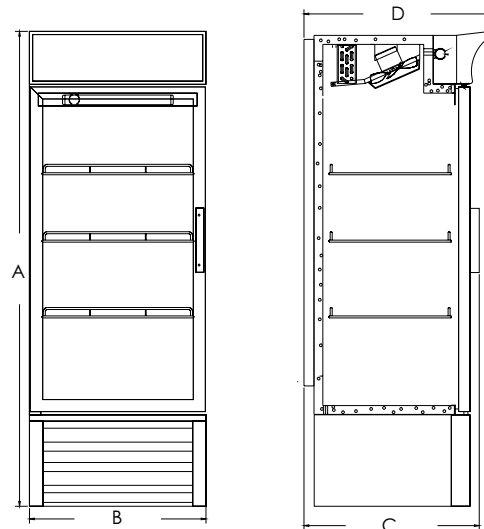
| Specifications          |  |                 |                        |                 |                    |                 |
|-------------------------|--|-----------------|------------------------|-----------------|--------------------|-----------------|
| MODEL                   | CV-14  | CV-14-AI        | CV-16                  | CV-16-AI        | CV-32              | CV-32-AI        |
| Capacity (cubic feet)   | 12.6 cubic feet                                      |                 | 14.6 cubic feet        |                 | 31.4 cubic feet    |                 |
| Capacity (liters)       | 356 lt   |                 | 412 lt                 |                 | 890 lt             |                 |
| Temperature range       | -20° to -16° C (-4° to 3°F)                          |                 |                        |                 |                    |                 |
| Interior finish         | White finish   | Stainless steel | White finish           | Stainless steel | White finish       | Stainless steel |
| Exterior finish         | White finish   | Stainless steel | White finish           | Stainless steel | White finish       | Stainless steel |
| Number of doors         | 1  |                 | 1                      |                 | 2                  |                 |
| Illuminated Display     | Yes  |                 | Yes                    |                 | Yes                |                 |
| Exhibition levels       | 4  |                 | 5                      |                 | 9                  |                 |
| Insulation              | Foamed in place high density polyurethane (CFC Free) |                 |                        |                 |                    |                 |
| Cooling system          | Forced air cascade system                            |                 |                        |                 |                    |                 |
| Refrigerant             | R-134 a  |                 |                        |                 |                    |                 |
| Volts                   | 127V/60 Hz (220 V/50 Hz optional)                    |                 |                        |                 |                    |                 |
| Hermetic compressor     | ½ HP/372.8 kw  | ½ HP/372.8 kw   | (2) ½ HP/372.8 kw each |                 |                    |                 |
| Automatic defrost cycle | Hot gas  |                 |                        |                 |                    |                 |
| Lamps                   | 2 lamps (17 watts)                                   |                 | 2 lamps (32 watts)     |                 | 3 lamps (32 watts) |                 |
| Net Weight              | 125 kg/ 275 lb                                       |                 | 152 kg / 335 lb        |                 | 249 kg/ 549 lb     |                 |



**UNIFORM TEMPERATURE**

Forced air cascade system, provides uniform temperature through the product load, includes automatic stop defrost cycle.

**DIMENSIONS**



**OPTIONAL MODELS**

**CV-AI**



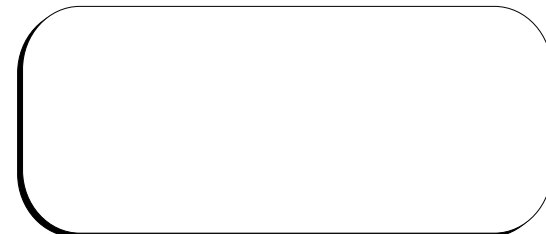
Stainless steel

**CV-AIS**



Solid door (s)

DISTRIBUTED BY



SAFETY & SANITATION  
Conforms to UL-471  
Conforms to NSF-7

ALL INFORMATION IS SUBJECT TO CHANGE WITHOUT NOTICE



**VERTICAL FREEZERS**

**FREEZING TROUBLE FREE**



**CV-14 MODEL**

**CV-32-AI MODEL**

**CV-16-AI MODEL**

- Frost free
- Triple pane glass doors
- Self-closing door (s)
- Stainless steel bottom
- Adjustable shelves
- Thick walls filled with high density polyurethane
- No plumbing required, evaporative condensing pan included

- Automatic defrost cycle
- Forced air cascade system
- Illuminated display



CV-14

These models include illuminated sign panel for an attractive exhibition and increase sales with your own sign



CV-16-AI



CV-32-AI



It features automatic defrost system, frost free keeping the freezer's interior clean longer.

**Better exhibition and more sales because its special illumination for low temperatures**

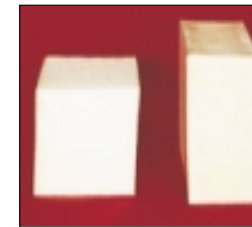
**THERMOSTAT**

All TORREY freezers include thermostat to control the freezers temperature, according to your requirements.



**ENERGY SAVINGS**

Thick walls filled with high density polyurethane to prevent heat interchange and to save energy.



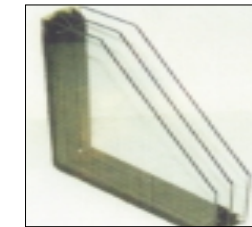
**THERMOMETER**

Indicates the operation temperature of the freezer, and gives confidence to the customer.



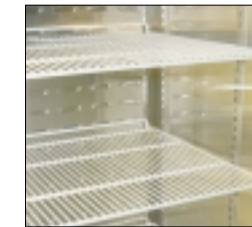
**EXCELLENT EXHIBITION**

Three panels of glass provide two insulated spaces for twice the insulation value and minimized condensation for an excellent product exhibition.



**ADJUSTABLE SHELVES**

Extra heavy duty adjustable shelves designed to create the ideal space for any size arrangement and optimize internal space.



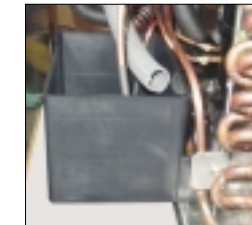
**STAINLESS STEEL FLOOR**

Stainless steel floor for sanitary operation and resistant interior and exterior finishes for the best presentation and a long lasting sanitary operation.

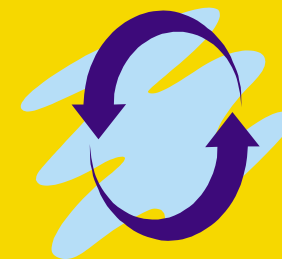


**NO DRAIN OR PLUMBING REQUIRED**

Automatic evaporative condensation pan, eliminates plumbing.



**STOP-LESS OPERATION**



Freezing system with automatic hot gas defrost cycle. It is not necessarily unplug the equipment, you won't waste time defrosting it.

**TORSION BAR SYSTEM ON THE DOORS**

Door(s) feature(s) torsion bar system which automatically closes the door(s) saving energy and reducing compressor's effort..



**EASY MAINTENANCE**

Frontal access for easy maintenance of the condensig unit.

